

KEY PENINSULA FIRE M&O LEVY INFO



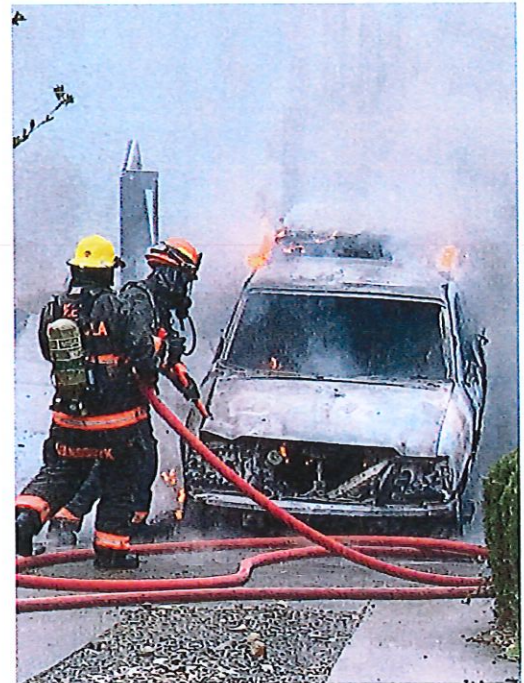
THE ASK

RENEWAL OF
THE M & O
LEVY FOR
\$800,000

The revenue from the M & O Levy will ensure the continuation of:

- Current level of service
- Current staffing levels
- Maintenance of current facilities
- Maintenance of current equipment





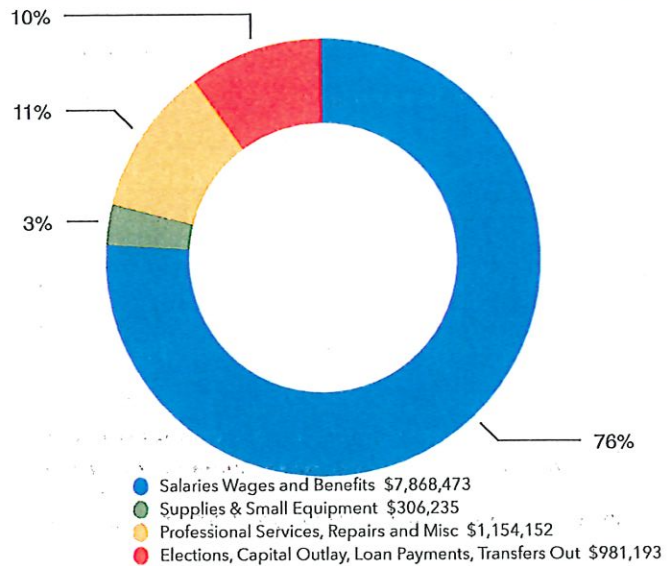
M & O FACTS

For your August 6 Ballot

- Fire District 16 has three funding sources: Regular Fire Levy, EMS Levy and the M&O Levy
- The M&O has been in place since 2012 and was renewed in 2016 and in 2020
- The M&O provides \$800,000 in revenue which equates to 6.5% of the District's budget
- This is the same \$800,000 that was requested and approved in 2012, 2016 and 2020
- **THIS IS NOT A NEW TAX- YOUR TAXES SHOULD REMAIN NEUTRAL**
- A YES VOTE will allow us to.....
 - maintain current staffing levels necessary to ensure your safety.
 - maintain firefighting equipment and trucks to ensure it works when you need it most
 - maintain aging facilities to serve our community needs

Key Peninsula Fire

Staffing and Budget Info



Expense Categories

M & O Levy Supports the Following:

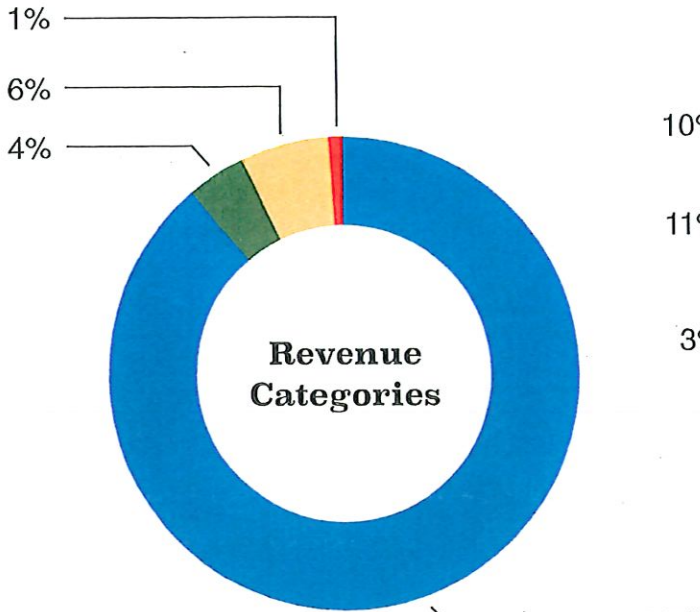
- 33-front line full-time personnel
- 14-volunteers
- 1-Division Chief of Training
- 2-Chief Officers (Fire Chief and Assistant Chief)
- 1-Executive Assistant
- 1-Administrative Assistant
- 1-PIO/Fire Prevention Officer
- Deployment:
 - Station 44 (Wauna): Paramedic Unit & Engine
 - Station 45 (Wright Bliss): Volunteer station with 1 Water Tender & Brush Truck
 - Station 46 (Key Center): Admin offices, Engine, Rescue, Water Tender, Marine Units
 - Station 47 (Home): Battalion Chief, Engine, backup Medic Unit, Rescue Boat
 - Station 48 (Herron Island): Volunteer station with 1 Engine
 - Station 49 (Longbranch): Paramedic Unit & Engine

How Key Peninsula Fire is Funded (2023):

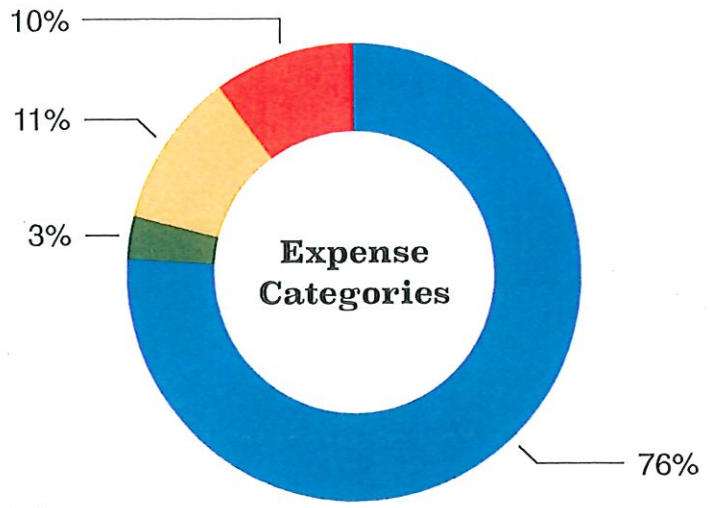
- Fire Levy: \$1.30/\$1000 valuation (\$6,321,651)
- EMS Levy: \$0.33/\$1000 (\$1,611,827)
- M&O Levy: \$0.17/\$1000 (\$798,973)
- Ambulance Billing: \$500,000
- GEMT: \$400,000 (Ground Emergency Medical Transportation)*

**Outside of grant opportunities and GEMT, the District is not funded by any federal or state dollars*





- Taxes \$9,087,857
- Licenses, Permits, ILA & Services/Other \$450,350
- Charges For Goods and Services \$650,750
- Transfers In \$121,096



- Salaries Wages and Benefits \$7,868,473
- Supplies & Small Equipment \$306,235
- Professional Services, Repairs and Misc \$1,154,152
- Elections, Capital Outlay, Loan Payments, Transfers Out \$981

KEY PENINSULA FIRE

Fire Department Funding